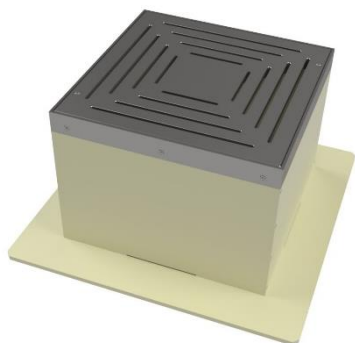


IC-V 400 heavy-duty inspection chamber

Part No.: 3071



Application area

The IC-V 400 is part of our IC-V heavy-duty inspection chamber range designed for vehicular traffic. IC-V 400 is designed to efficiently discharge surface water in "sealed" paving surfaces with 300 mm depth that withstand vehicular traffic. It also allows for the inspection and maintenance of the outlet beneath it.

Benefits

- ☑ made of impact and UV resistant polypropylene
- ☑ designed to withstand vehicular traffic for light vehicles
- ☑ allows for easy inspection and quick maintenance of the outlets
- ☑ an accumulated open surface of 95 cm² present on the lid allows for the drainage of surface water
- ☑ unbreakable + lockable steel lid (black paint)
- ☑ also available in custom-fitted heights for easier installation

Technical data

Height	300 mm
Width	400 mm
Length	400 mm
Weight	21.7 kg
Material of base	Polypropylene (PP)
Colour of base	RAL7032
Material of lid	painted steel (1.0038)
Colour of lid	black
Effective drainage area	95 cm ²
Packaging unit	8 pcs/pallet

Specification suggestion

ArchiGreen® IC-V 400 is a heavy-duty inspection chamber designed to withstand vehicular traffic. Installed in "sealed" paving surfaces with 300 mm depth the IC-V 400 allows for the inspection and maintenance of outlets. Features incl.: made of impact and UV resistant polypropylene with load distribution footprints; an accumulated open surface of 95 cm² present on the painted (black) steel lid allows for the drainage of surface water, size: 400×400×300 mm (L×W×H); weight: 21.7 kg; colour of the base: beige, RAL7032.

Dimensions

